

The background features several abstract blue watercolor elements. In the top left, there are two overlapping, soft-edged watercolor shapes. On the right side, there are several thin, parallel, curved lines that resemble a stylized wave or a series of concentric arcs. In the bottom left corner, there is a cluster of small, dark blue dots and splatters of varying sizes. The overall aesthetic is clean, artistic, and modern.

Final Collage

Updated: September 12

Character Breakdown: Age-20's
Core Desire: to maintain stability
Social class: Lower class, eastern European immigrant
Physicality: Female
Career: Individual house Cleaner

Maid

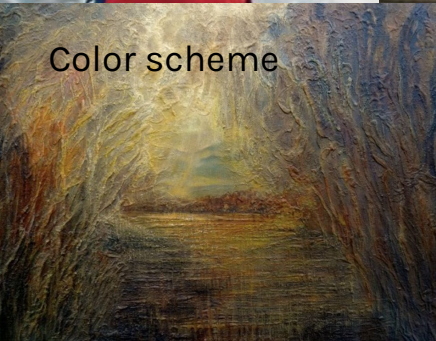
Piece list:

- Coat- Check stock
- Cardigan- color
- Button down- White
- Bottom- black
- Sneakers- white

Coat



Color scheme



Pants



Cardigan



Hairstyle



Character Breakdown: Age-20's

Core Desire: to be valued

Social class: Higher class, born into wealth but recently removed from it

Physicality: male or female

Career: Music Producer- what kind of music?
(change based on the type of music)

Young Man

Piece list:

<https://ladieschurchsuits.com/mens-walking-suit-on-sale>

- Jacket
- Button up top
- Belt
- Tie
- Pants
- Dress shoes



cutie ❤️



LIMERENCE



Wife

Character Breakdown: Age-Early 40's

Core Desire: to receive justification

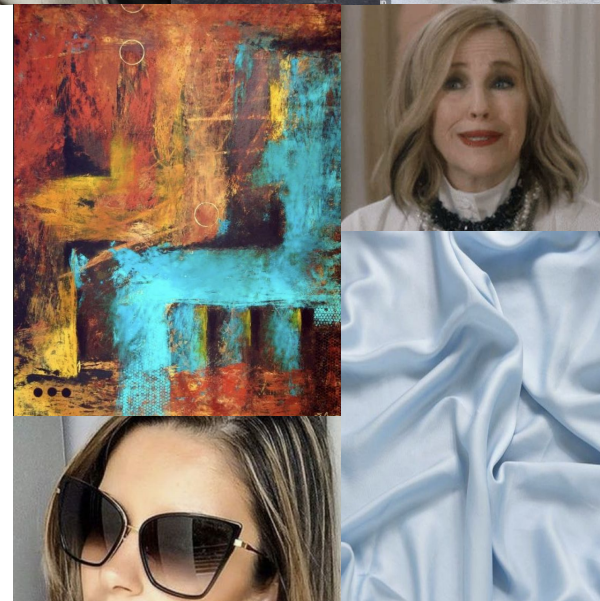
Social class: middle class

Physicality: Female

Career: Real estate property manager. In charge of making sure tenants are satisfied with the property, also maintaining the property

Piece list:

- Leather pants
- White cashmere sweater
- Tan trench coat-floor length
- Heels
- Mask
- Sunglasses
- Black Scarf
- Blonde wig



Character Breakdown: Age-late 40's

Core Desire: to be seen

Social class: middle class

Physicality: Male

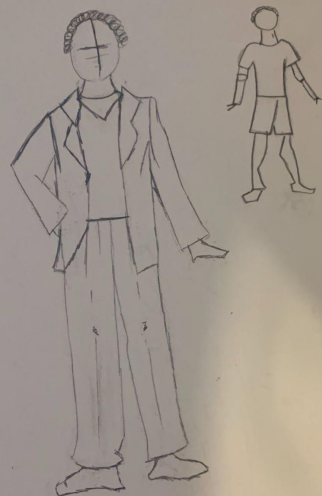
Career: Professor- possibly english, University of Chicago

Husband

Pieces:

- White undershirt
- Sweater vest
- Suit jacket
- Dark jeans

HUSBAND
american la Ronde



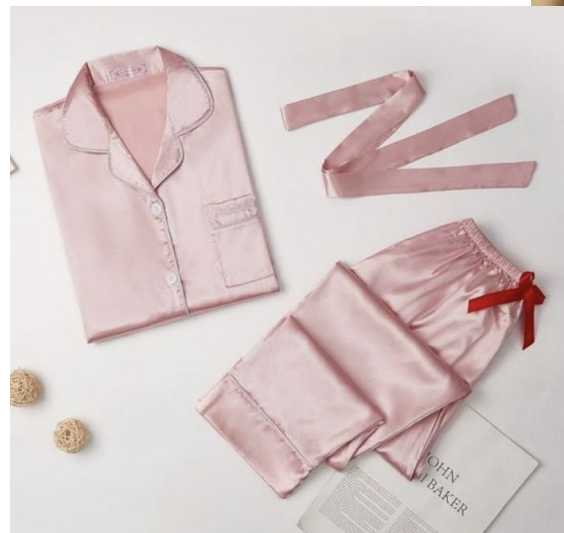
Husband:

- Plaid boxers
- Undershirt (white?)
- Robe

Husband and Wife Scene

Wife:

- Silky pants
- Silky short sleeve button down
- Robe



Student

Character Breakdown: Age-early 20's

Core Desire: Find a place to belong

Social class: lower class

Physicality: female

Career: student- studying english, Junior

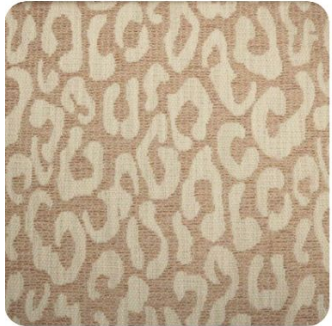
A warmer chicago day (spring or fall?)



Piece List:

- Oversized leather Jacket
- T-shirt, tight cropped
- Carpenter jeans
- Heeled boots

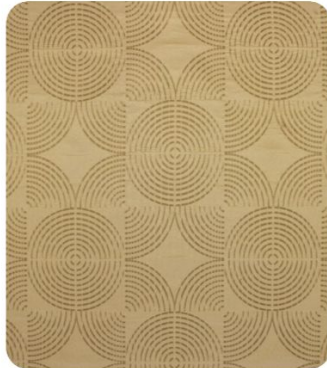
Circle Elements



Top Fabric Santana Fabric



32786-380 Granite by Duralee



Panthers Fabric



Guardi Fabric

